



**Kari Greene**  
082 824 7278  
kari.greene@seeff.com

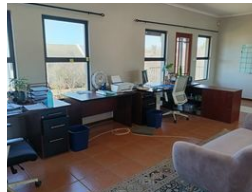
Contact Seeff Nottingham Road

033 266 6456

29 Gowrie Avenue  
Gowie Village  
Nottingham Road  
KwaZulu Natal



Web Ref RLS923089



R16,800 pm

2 1

**Monthly Levy** R0.0 **Monthly Rates** R0.0 **Special Levy** R0.0  
**Lease Period** 12 months **Availability** Immediately **Deposit** R31,000  
**Annual Escalation** 10 %  
**Lease Excludes:**  
Electricity  
Refuse removal  
DSTV  
WIFI

### Two Bedroom Apartment in Gowrie Village

Lovely upstairs 2 bedroom apartment with a full family bathroom, an open plan spacious lounge and dining area - with a centrally located cozy fireplace. Compact friendly kitchen. Both carpeted bedrooms are fairly spacious with BIC. Centrally located in the secure friendly estate of Gowrie Village.  
Rent excludes electricity, Wifi, DSTV and refuse removal.

Give us a call if this cute conveniently located apartment appeals to you - it wont last long !!!

### Features

| Interior     |    | Exterior            |      |
|--------------|----|---------------------|------|
| Bedrooms     | 2  | Carports / Parkings | 1    |
| Bathrooms    | 1  | Security            | Yes  |
| Kitchens     | 1  | Pool                | No   |
| Recep. Rooms | 2  | Views               | True |
| Furnished    | No |                     |      |

