



Kari Greene
082 824 7278
kari.greene@seeff.com

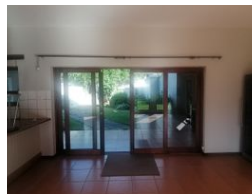
Contact Seeff Nottingham Road

033 266 6456

29 Gowrie Avenue
Gowie Village
Nottingham Road
KwaZulu Natal



Web Ref RLS985533



R17,900 pm

Lease Period 12 months
Annual Escalation 10 %
Lease Excludes:
Eskom

Availability 01 Dec 2025 **Deposit** R27,000

2 1

Ideal Living: 2-Bedroom downstairs Apartment in Sought-After Secure Estate

Presenting a fantastic opportunity to live in a secure, gated community with 24-hour security! This 2-bedroom, full bathroom apartment offers comfortable and convenient living.

The heart of the home is an open-plan lounge, dining room, and a well-appointed fitted kitchen. Stay warm in winter with a cozy fireplace and underfloor heating in the lounge area. Both bedrooms are carpeted and feature built-in cupboards (BIC), providing excellent storage.

One of the highlights is the seamless transition from the living area through large sliding doors directly into your own beautiful, well-maintained, and walled private garden. Additionally, the front door opens onto a communal green space, perfect for outdoor entertainment, children's activities, or simply relaxing under the shade of mature trees. Parking includes one covered bay and...

Features

Interior

Bedrooms	2
Bathrooms	1
Kitchens	1
Recep. Rooms	1
Furnished	No

Exterior

Carports / Parkings	1
Security	Yes
Pool	No
Views	False

