



**Kari Greene**  
082 824 7278  
kari.greene@seeff.com

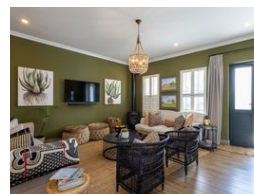
Contact Seeff Nottingham Road

033 266 6456

29 Gowie Avenue  
Gowie Village  
Nottingham Road  
KwaZulu Natal



Web Ref RLS968987



R4,500,000

🛏 4 🚿 4 🚗 2

**Monthly Bond Repayment** R45,685.30

Calculated over 20 years at 10.75% with no deposit.

**Transfer Costs** R343,009.00 **Bond Costs** R57,265.00

These calculations are only a guide. Please ask your conveyancer for exact calculations.

**Monthly Levy** R2,632 **Monthly Rates** R2,492 **Special Levy** R0.0

### Affordable Stylish Elegance

This bright, modern double-story home offers everything you need, 3 sunlit ensuite bedrooms upstairs, a guest room downstairs in a contemporary setting to enjoy new home.

Designed generously - the living spaces are perfect for family relaxation, featuring a cozy corner fireplace in the lounge. The modern kitchen includes built-in conveniences & opens onto the patio entertainment area with a built-in braai. The property is private, walled with 2 garages & a beautiful garden.

The location is unbeatable, with a casual stroll to your favourite coffee shop & other amenities, and top schools like Michaelhouse, Clifton & St Anne's just moments away. Surrounded by fresh air, friendly neighbours, and a lively community - it's a lifestyle you'll love!

Click or Call We Do it All - SOLE & No 1 & only...

### Features

**Pets Allowed** Yes

#### Interior

Bedrooms	4
Bathrooms	4
Kitchens	1
Recep. Rooms	2
Furnished	No

#### Exterior

Garages	2
Carports / Parkings	2
Security	Yes
Pool	No
Views	True

#### Sizes

Floor Size	227m <sup>2</sup>
Land Size	347m <sup>2</sup>

#### Extras

Country Living 24 Hour Access Double Storey swimming pool in the estate pickle ball court  
Security Estate Fireplace Communal Braai Area Gated Community

