



Peter Greene
082 556 3674
peter.greene@seeff.com

Contact Seeff Nottingham Road

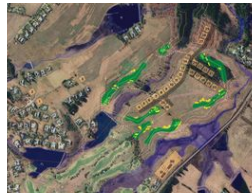
033 266 6456

29 Gowrie Avenue
Gowie Village
Nottingham Road
KwaZulu Natal

NO TRANSFER DUTY



Web Ref RLS933508



R2,450,000

Monthly Bond Repayment R25,288.62

Calculated over 20 years at 11% with no deposit.

Transfer Costs R111,720.00 **Bond Costs** R38,415.00

These calculations are only a guide. Please ask your conveyancer for exact calculations.

Monthly Levy R4,200 **Special Levy** R1,520

Breathtaking Views – Build Your Dream Home!

Secure one of the last few vacant stands on Gowrie Farm phase 2 and discover the perfect blend of modern living and countryside charm. A "slice of the Midlands" with this prime, build-ready stand. Don't wait and regret it—make it yours today!

Prime Location – Everything Within Reach!

- * Escape the city's hustle and embrace tranquil country living
 - * Enjoy exclusive access to walking and cycling trails across scenic farmland
 - * Indulge in world-class amenities: indoor heated pool, golf course, and tennis courts & 19th hole!
 - * A unique 360Ha estate, with a large portion still operating as a working farm
 - * Just 4 hours from Johannesburg and 1.5 hours from Durban
 - * Close to prestigious private schools with amenities for a fulfilling retirement phase too
- Privacy, security, and a smart investment for your hard-earned Rand!
Isn't this...

Features

