



Peter Greene

Principal Property Practitioner
Registered with PPRA (FFC 202 322 522 8)
082 556 3674
peter.greene@seeff.com



Peter Greene

Principal Property Practitioner
Registered with PPRA (FFC 202 322 522 8)
082 556 3674
peter.greene@seeff.com

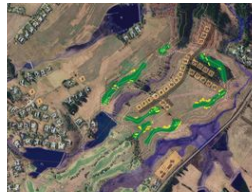
Contact Seeff Nottingham Road

033 266 6456

29 Gowrie Avenue
Gowrie Village
Nottingham Road
KwaZulu Natal



Web Ref RLS918839



R2,590,000

Monthly Bond Repayment R26,294.43

Calculated over 20 years at 10.75% with no deposit.

Transfer Costs R122,920.00 **Bond Costs** R38,415.00

These calculations are only a guide. Please ask your conveyancer for exact calculations.

Monthly Levy R4,200

Monthly Rates R1,820

Sectional Title Levy R0.0

Special Levy R1,520

Secure Your Dream Lifestyle at Gowrie Farm Phase 2!

Don't miss the opportunity to own one of the last remaining vacant stands in the prestigious Gowrie Farm Phase 2. Embrace the tranquility of countryside living without sacrificing modern convenience. This prime, build-ready stand offers a unique "slice of the Midlands" lifestyle, scenic beauty with exceptional amenities.

Experience the Gowrie Farm Advantage & escape the city bustle & discover a peaceful rural retreat. Enjoy exclusive access to scenic walking & cycling trails across the expansive 360Ha estate, where a large portion remains a working farm. Indulge in world-class amenities, including an indoor heated pool, championship golf course, tennis courts & the renowned 19th hole. Benefit from a prime location, just 4 hours from Johannesburg and 1.5 hours from Durban, with close proximity to prestigious private schools &...

Features

