

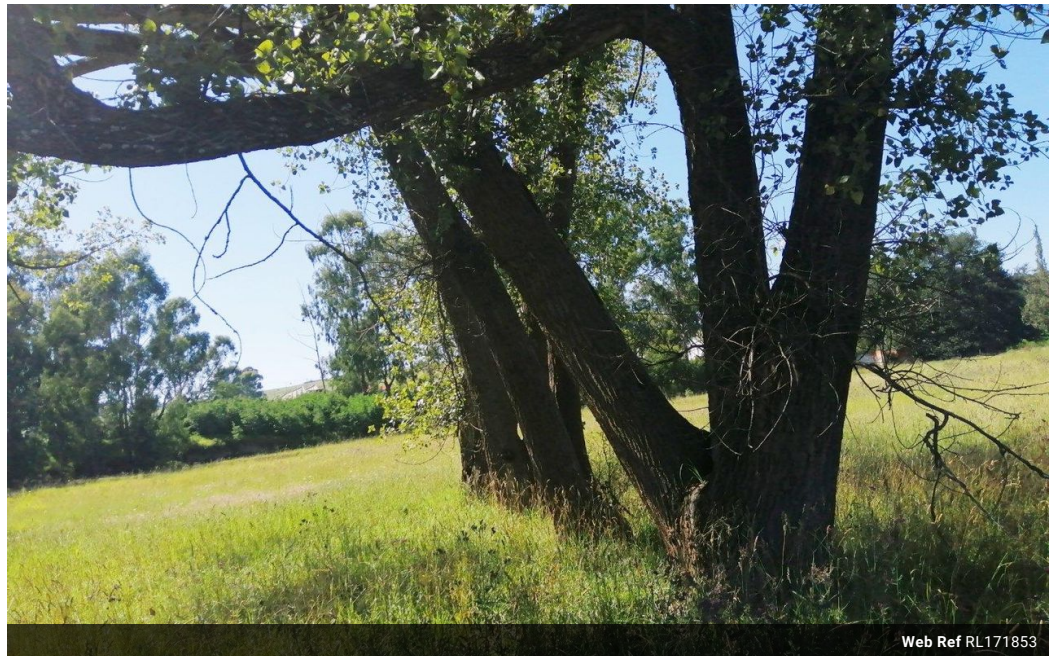


**Peter Greene**  
082 556 3674  
peter.greene@seeff.com

Contact Seeff Nottingham Road

033 266 6456

29 Gowie Avenue  
Gowie Village  
Nottingham Road  
KwaZulu Natal



Web Ref RL171853



## R300,000

**Monthly Bond Repayment** R3,096.57

Calculated over 20 years at 11% with no deposit.

**Transfer Costs** R15,517.00    **Bond Costs** R10,985.00

These calculations are only a guide. Please ask your conveyancer for exact calculations.

### Commercial Land In Rosetta

This land has to be sold with two other pieces, which makes it a very nice 12,328 sq meter commercial block of level land with road frontage on the R103 in central Rosetta

### Features

