

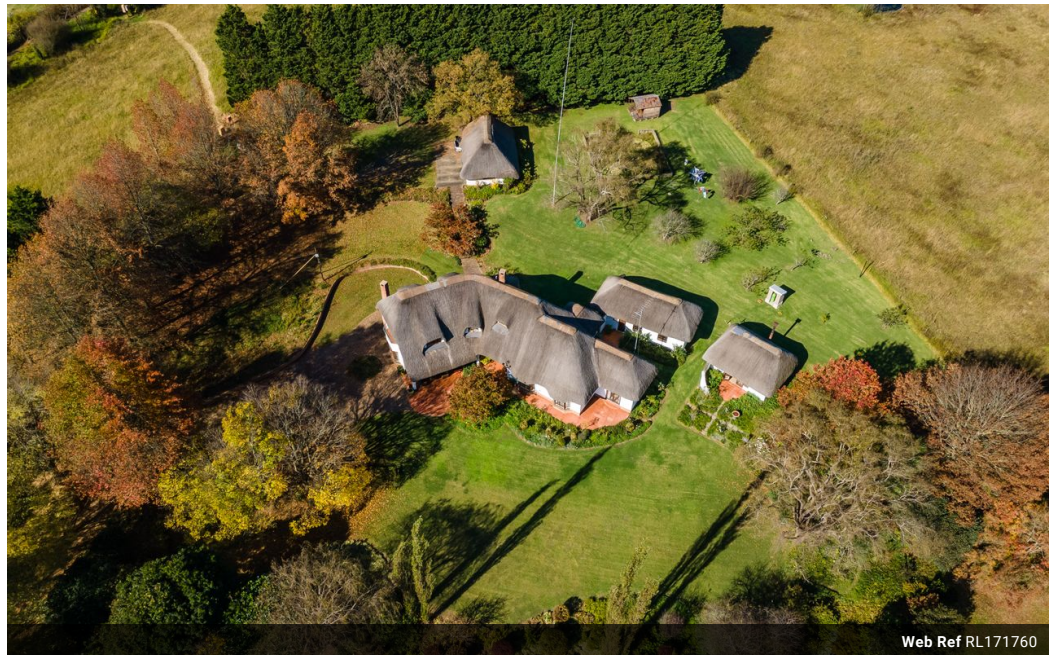


**Peter Greene**  
Principal Property  
Practitioner  
Registered with PPRA  
(FFC 202 322 522 8)  
082 556 3674  
peter.greene@seeff.com

Contact Seeff Nottingham Road

033 266 6456

29 Gowie Avenue  
Gowie Village  
Nottingham Road  
KwaZulu Natal



Web Ref RL171760



R3,999,990

🛏 4 🚿 3 🚗 3

**Monthly Bond Repayment** R40,609.06

Calculated over 20 years at 10.75% with no deposit.

**Transfer Costs** R281,048.90 **Bond Costs** R51,610.00

These calculations are only a guide. Please ask your conveyancer for exact calculations.

**Monthly Levy** R1,700

## Best of Both Worlds

Secure Estate living on 6564 sq meters, but country living at its best with stunning views over Giant's Castle and the Estate also has a long river frontage. A variety of game and water fowl frequents the Estate This comfortable home is on the outskirts of the hamlet of Rosetta, only 6 kilometers from Nottingham Road and it has approved zoning to run as a lodge with development rights for 40 bedrooms, conferencing center, a spa, hair/beauty salon, shop and a restaurant.

The picture pretty garden compliments the gracious home with its modern, farm style kitchen with a center island and a separate scullery. The whole setup begs to be used for garden parties or a pretty tea garden. There are 2 outside cottages with their own bathrooms, which can easily be converted to self contained rental units.

## Features

### Interior

Bedrooms	4
Bathrooms	3
Kitchens	1
Studies	1
Furnished	No

### Exterior

Garages	3
Security	No
Pool	Yes
Views	False

### Sizes

Floor Size	322m <sup>2</sup>
Land Size	6,564m <sup>2</sup>

